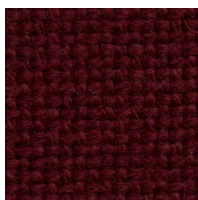


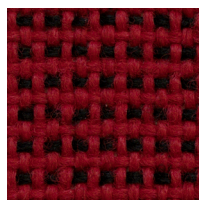
CAGLIARI KATEGORIE A



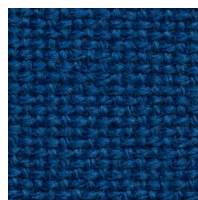
C 2



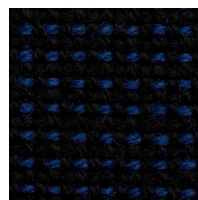
C 29



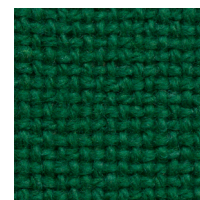
C 16



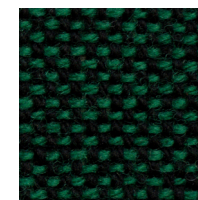
C 6



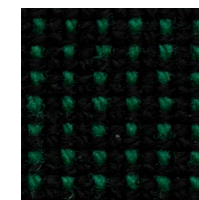
C 27



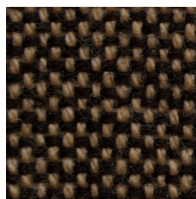
C 34



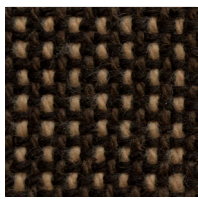
C 31



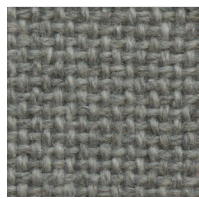
C 32



C 20



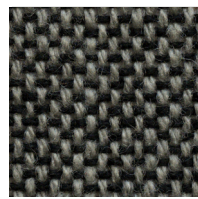
C 24



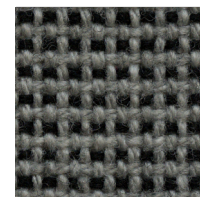
C 5



C 13



C 73



C 7



C 38



C 11

CZ

SLOŽENÍ: 50% PES - 40% PAC -10% A.F.,
HMOTNOST: 300 g/m² ± 10,
ŠÍŘE: 143 cm ± 2,
ODOLNOST PROTI ODĚRU: 40 000 Martindale,
ODOLNOST PROTI ŽMOLKOVÁNÍ: skupina 4/5,
STÁLOBAREVNOST: skupina 4/5,
ODOLNOST PROTI OHNI: EN 1021-1:2006



EN

COMPOSITION: 50% PES - 40% PAC -10% A.F.,
WEIGHT: 300 g/m² ± 10,
WIDTH: 143 cm ± 2,
ABRASION RESISTANCE: 40 000 Martindale,
PILLING: group 4/5,
LIGHT FASTNESS: group 4/5,
FLAMMABILITI: EN 1021-1:2006



DE

ZUSAMMENSETZUNG: 50% PES - 40%
PAC -10% A.F.,
GEWICHT: 300 g/m² ± 10,
BREITE: 143 cm ± 2,
SCHEUERFESTIGKEIT: 40 000 Martindale,
PILLING: Gruppe 4/5,
LICHTTECHTHEIT: Gruppe 4/5,
FEUERSICHERUNG: EN 1021-1:2006

